



Thurstan Street, London
SW6

GARTONJONES.COM



Thurstan Street, London
, SW6

GARTON JONES.COM

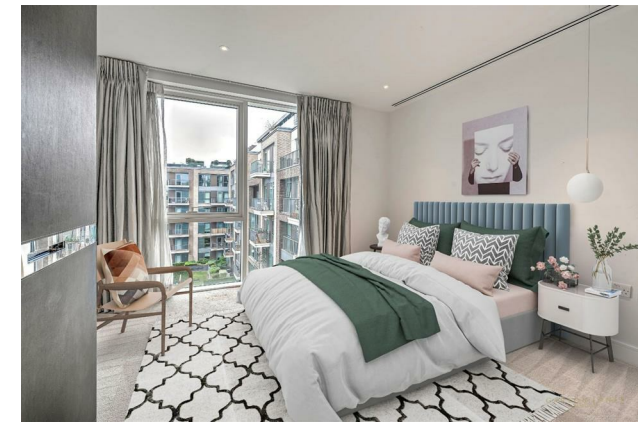
13 Park Street
Chelsea Creek
London
SW6 2FS

Sales +44 (0) 20 7824 7090
paul@gartonjones.com
www.gartonjones.com

£900,000 Leasehold

A spacious and contemporary two-bedroom apartment set on the 4th floor of Lockside House within the award-winning Chelsea Creek development by Berkeley St George. Offering 879sqft (81sqm) of internal space, the apartment includes a private balcony. The well-designed layout features a generous open-plan living/dining area, a modern kitchen with integrated appliances, and two double bedrooms both with fitted wardrobes, with the principal bedroom benefitting from an ensuite. A sleek guest bathroom and ample storage complete the home. Development Features include a 24-hour concierge, residents' spa, swimming pool, gym & sauna, landscaped canal-side gardens & built by Berkeley St George

- Two Bedroom Apartment
- 4th Floor With Lift
- 879sqft (81.7sqm)
- Idyllic Dockside Location
- Open Plan Lounge — Kitchen Area
- Integrated Appliances
- Balcony
- Residents Spa — Gym & Swimming Pool
- EPC C (69)



** Images staged for marketing Purposes **

Service Charge - £7052
Ground Rent - £500
Lease 999 years from 1st June 2010

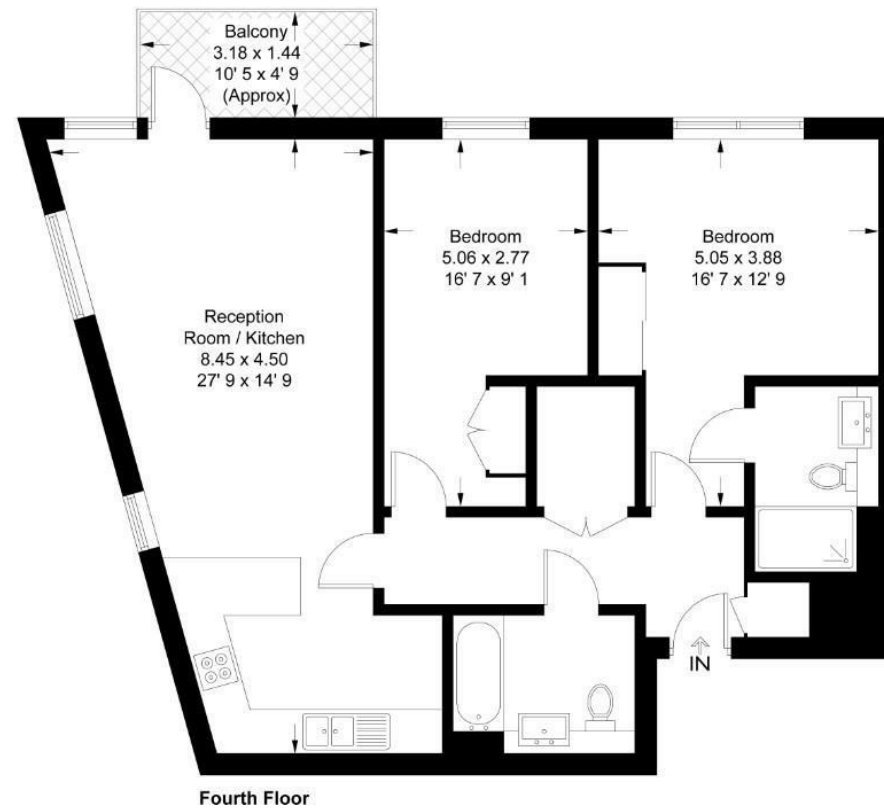
Council Tax — London Borough Of
Hammersmith & Fulham Council Band G
EPC C (69)

EPC certificate available on request.

Lockside House

Approximate Gross Internal Area = 879 sq ft / 81.7 sq m
Balcony = 49 sq ft / 4.6 sq m

GARTON JONES
LONDON



This plan is not to scale and must be used as layout guidance only. All measurements and areas are approximate and should not be relied upon to provide accurate information. This plan must not be relied upon when making property valuations, design considerations or any other such relevant decisions. We accept no responsibility or liability (whether in contract, tort or otherwise) in relation to any loss whatsoever arising from or in connection with any use of this plan or the adequacy, accuracy or completeness of it or any information within it.



